

# IMAGE-VET 70 PLUS



## Troubleshooting Reference

Trained Service Personal ONLY

Observe ALL safety Procedures in the service manual

Reference: Installation, Operation, Service & parts Manual (P/N: 897-000002)

## Table of Contents

1) Wiring Connections_____	1
2) No X-Ray or Light X-Ray_____	1
3) Error Codes_____	2-3
4) Miscellaneous_____	4

### Key

>	<b>Greater Than</b>
<	<b>Lower Than</b>
=	<b>Equal To</b>
≈	<b>About the Same</b>

## 1) I. Wiring Connections

Three wiring are coming out of the x-ray tube and are connected as follows:

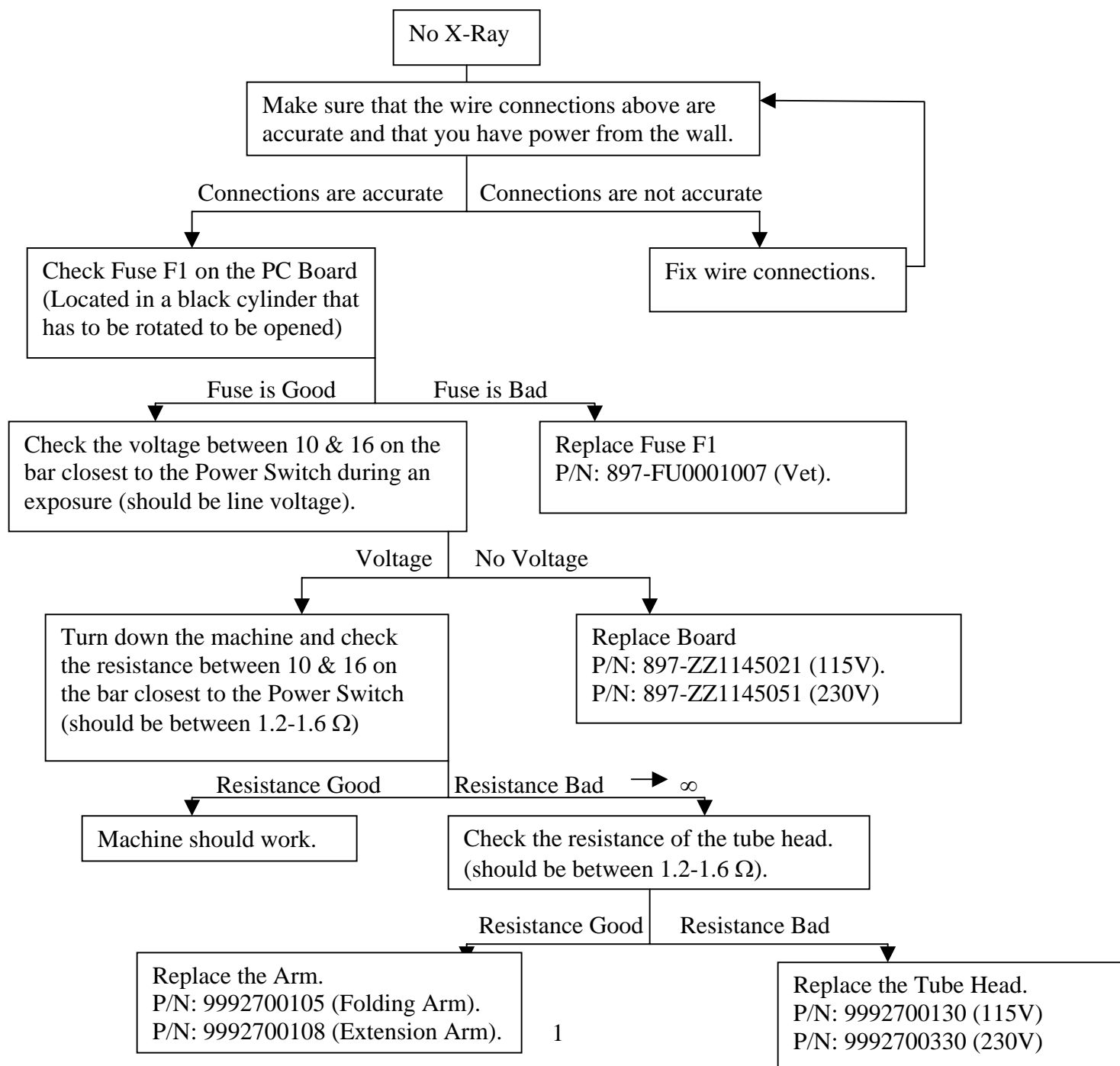
- The black wire (L) is connected to number 10 on the bar closest to the switch.
- The white wire (N) is connected to number 16 on the bar closest to the switch.
- Green-yellow is connected to ground (metal screw second on the left from the power switch).
- Place a jumper between 8 & 9 on the bar located further away from the switch (on the other side of the board).
- For Hand-Held usage make sure the jumper J1 (next to the above bar) is covering middle and right pins.
- For Remote Expose Switch make sure the jumper J1 (next to the above bar) is covering middle and left pins.

## II. Switch Connections

Position the control box so you can read the label next to the power switch.

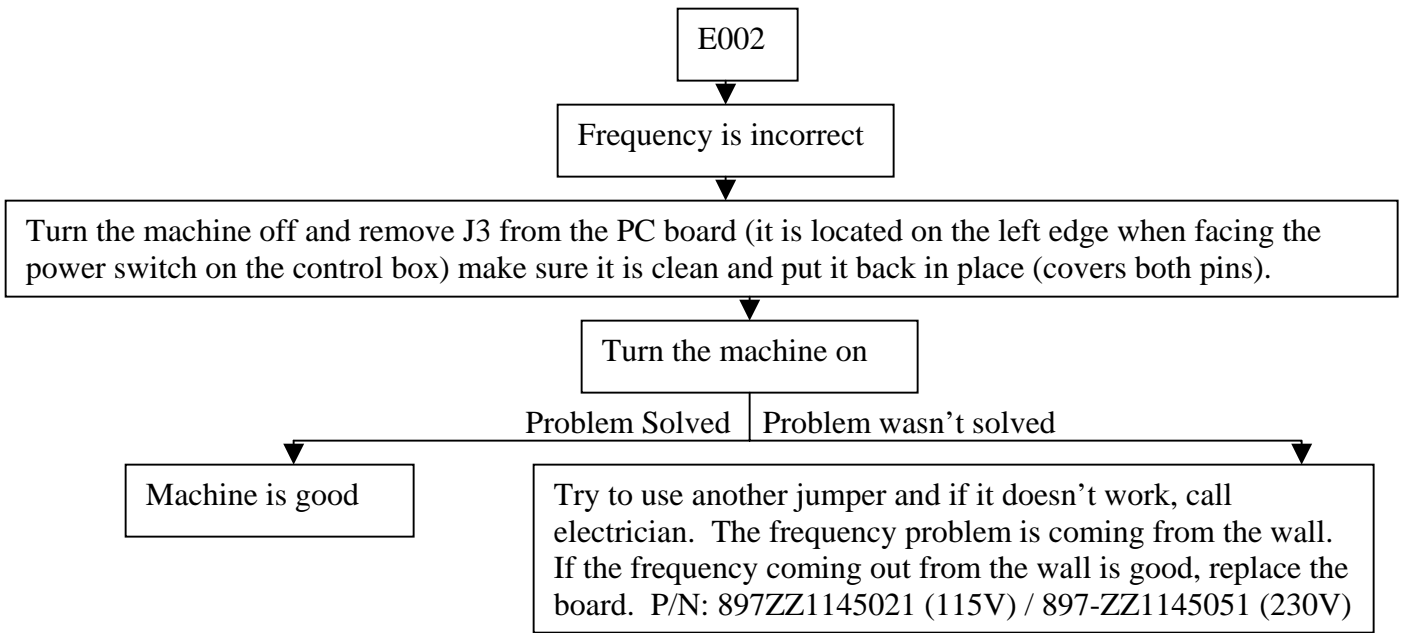
- The upper left and upper right metal stripes of the power switch are connected to number 5 & 6 on the bar closest to the switch, respectively.
- The lower left and lower right metal stripes of the power switch are connected to number 4 & 7 on the bar closest to the switch, respectively.

## 2) No X-Ray or Light X-Ray.



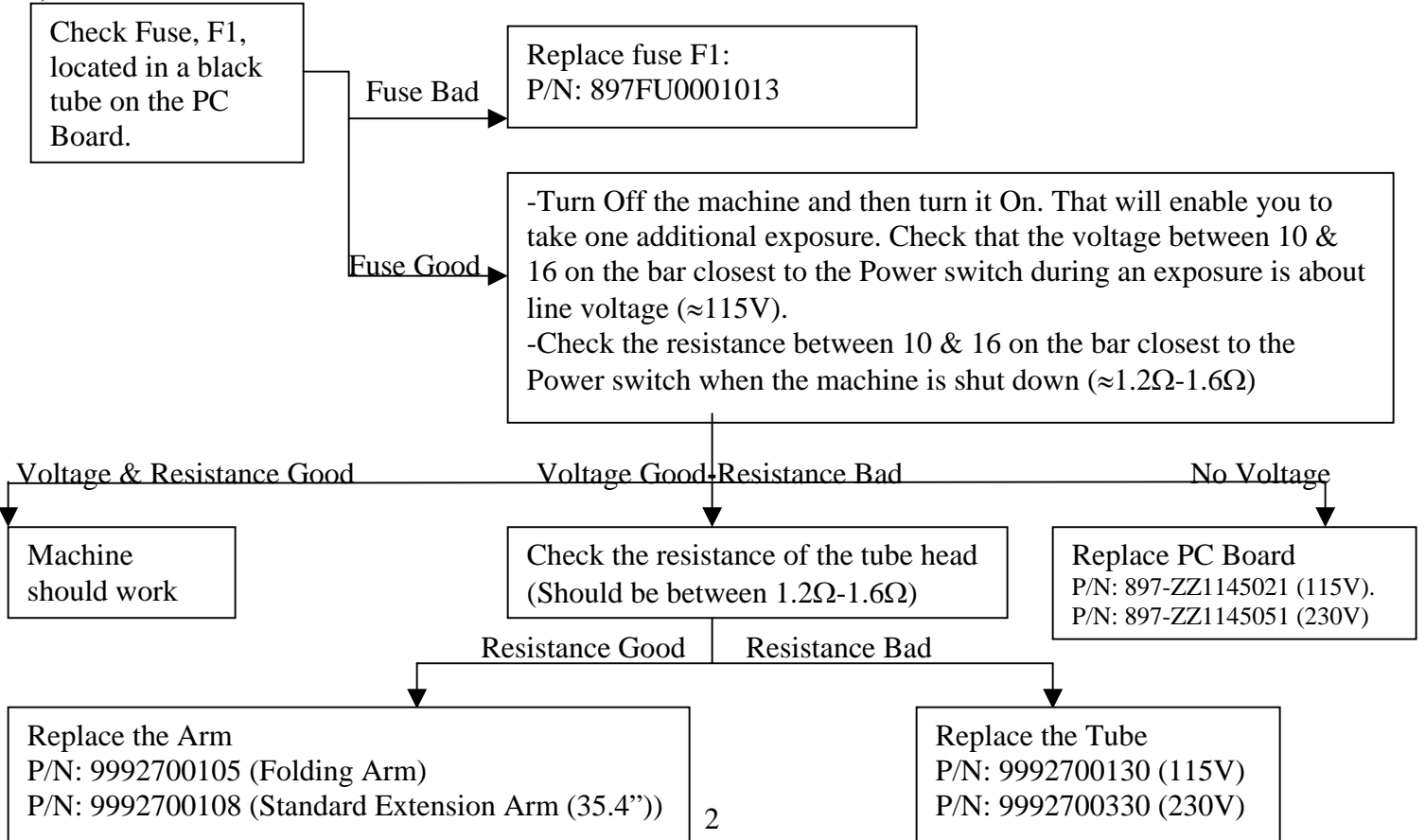
### 3) Error Codes

- a) E001: x-ray exposure button was released too fast.
- b) E002:

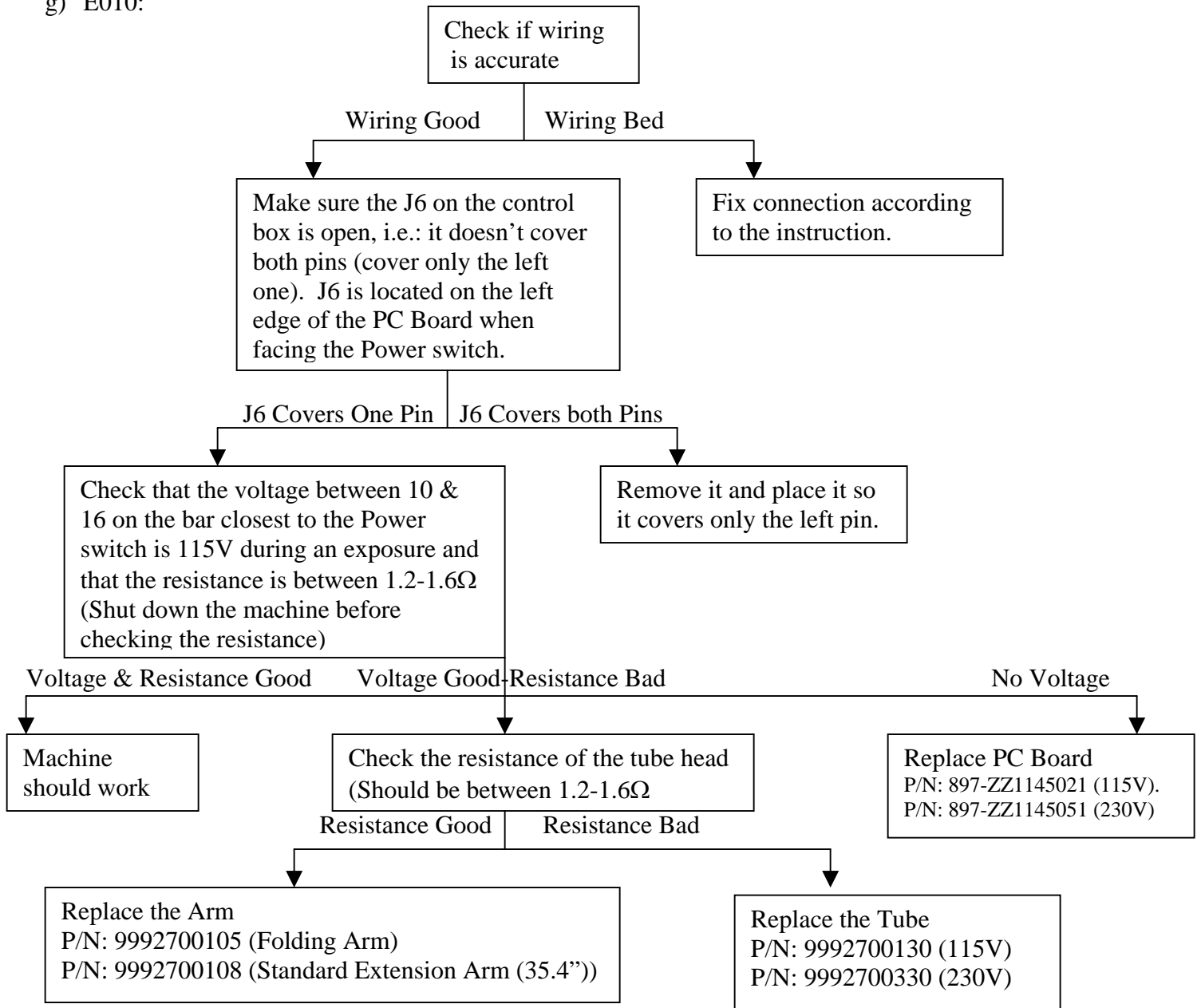


- c) E003-Turn the machine off and then on. If the problem persists, replace the PC Board.
- d) E004 / E005:  
The operational voltage range is  $108 < V < 126$ . If the error message is E004 / E005 than the voltage supply is above or below this range, respectively. Call an electrician to fix the problem.
- e) E006: -Two or more X-ray tubes may have been pulled out- Make sure that all tube heads besides one are in Position.  
-Equipment selector switch may be faulty.  
-Check wiring.

f) E009:



g) E010:



#### 4) Miscellaneous

- a) No Ready Light: Make sure that the jumper between 8 & 9, on the bar furthest from the Power Switch, is in place.
- b) Machine Doesn't Work but Everything Else is Fine: Check that J1 is to the right and covers pins 1 & 2. J1 location determines whether the Hand-Held device is used or whether an external device is used (J1 is located on the opposite side to the Power Switch).
- c) Setting the System in Remote Control Mode: Move J1 to the right so it covers the left and middle pins (orient the control box so you would be able to read the label next to the Power Switch).
- d) Machine Just Clicks but doesn't operate: Check that K2 on the PC board is in place (located on the upper-right corner when you orient the control box so you are able to read the label next to the Power Switch). Check that the connections on the hand-held control are in place as well.
- e) For dual tube head operations place a jumper between 14 & 17 on bar M2.1 (The one closest to the Power Switch). In addition, connect:
  - Number 13 on bar M2.1 to tube head B and to wall mount.
  - Number 11 on bar M2.1 to tube head B and to wall mount.
  - Number 10 on bar M2.1 to tube head A and to wall mount.

The micro-switches provided are to be connected as follows:

- Tube A is connected between terminals 8 & 9 on the M1 bar in the control box and the lower terminal 8 & 9 on the steel mounting plate.
- Tube B is connected between terminals 8 & 10 on the M1 bar in the control box and the lower terminal 8 & 9 on the steel mounting plate.