



**ImageWorks**  
Generations of Imaging

## **ImageScan HD Mobile X-Ray Assembly Quick Guide**

**These instructions serve as supplemental assembly guidance of the ImageScan HD. They are not meant to replace the installation manual, but rather serve to complement it.**

**If there are any questions, please do not hesitate to contact us**

**914-592-6100**



5/15/2020

**Remove base stand and column and attach together using 4 allen bolts**



**Make sure handles of post are on back side of x-ray (toward short legs)**

*ImageWorks Proprietary – Confidential Information*

**Remove front set screw from top of the column**



**Remove 2 M3 screws on top of column**



**Place neck cover in place over top of column**



*ImageWorks Proprietary – Confidential Information*

While holding scissor arm, thread pull cable through neck cover and top of column while inserting scissor arm flange into top of column.



Be careful not to pinch any cabling as the flange is inserted

*ImageWorks Proprietary – Confidential Information*

### Lift neck cover to reveal front set screw

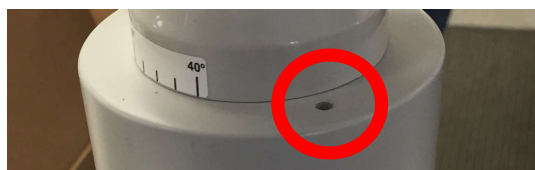
**Note:** the scissor arm can be moved horizontal to make room to lift neck cover, or the plastic elbow cover can be removed to lift neck cover.

**Align slot in scissor arm flange with front set screw hole and replace set screw.**



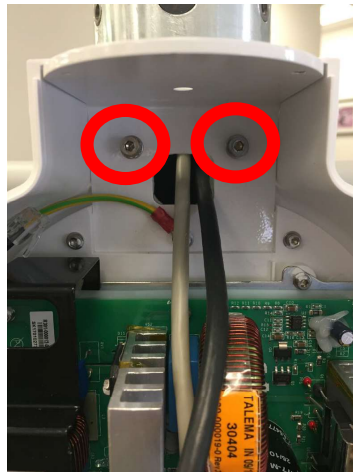
### Tighten front set screw

**Lower neck cover into place and replace 2 top screws in neck cover**



*ImageWorks Proprietary – Confidential Information*

Remove console cover and attach back of console to post with 2 allen bolts on top front of console...



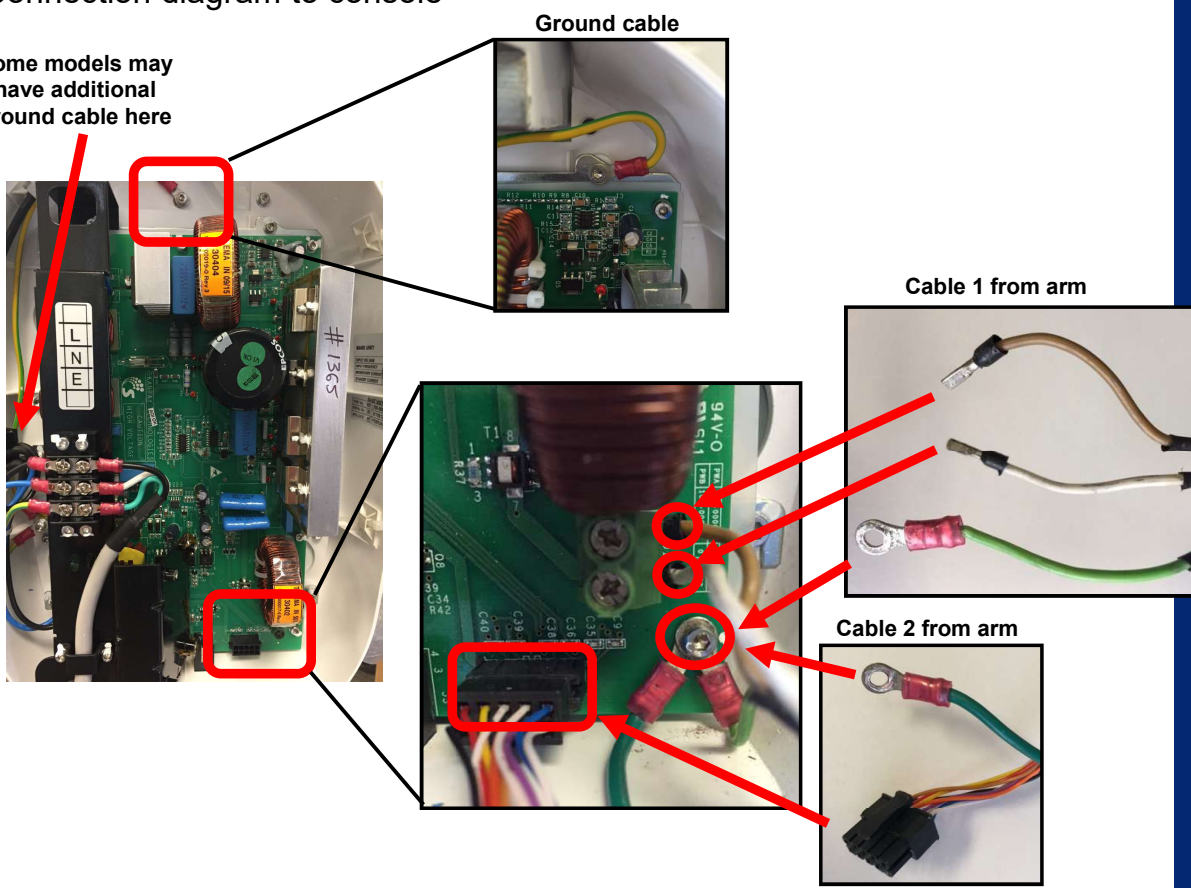
...and two allen bolts on lower rear of console.



ImageWorks Proprietary – Confidential Information

### Connection diagram to console

Some models may have additional ground cable here



ImageWorks Proprietary – Confidential Information

**Connect thumbswitch to underside of console**



**Route cable from front panel through hole in bottom rear of console to attach to underside of console**



**Attach front console cover.**

*ImageWorks Proprietary – Confidential Information*

***Refer to User Manual for Operation***

*ImageWorks Proprietary – Confidential Information*